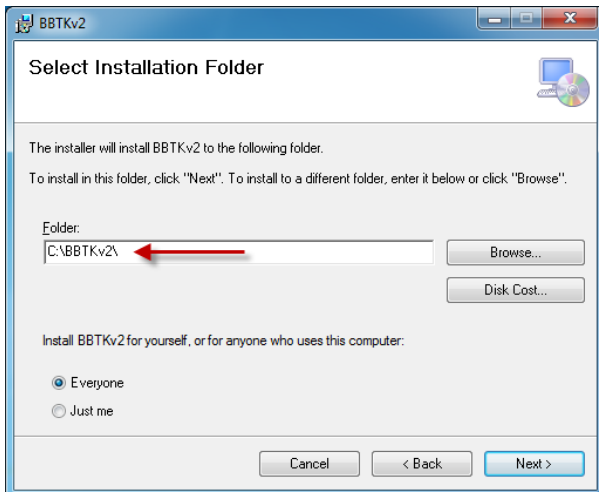

Addendum

Change to Default Installation Folder

To make installation more straightforward on Microsoft Windows 8 we have taken the decision to change the default installation folder to “C:\BBTKv2\”. This makes no practical difference to how the Black Box ToolKit operates on other systems such as XP or Windows 7 and the new default should be accepted for those too.



When prompted to Select Installation Folder you are advised to accept the new default folder of “C:\BBTKv2\”.

It is also recommended that you leave the Everyone radio button selected as this means that other users of the same computer should be able to use the BBTK PC Software even if they have another account.